

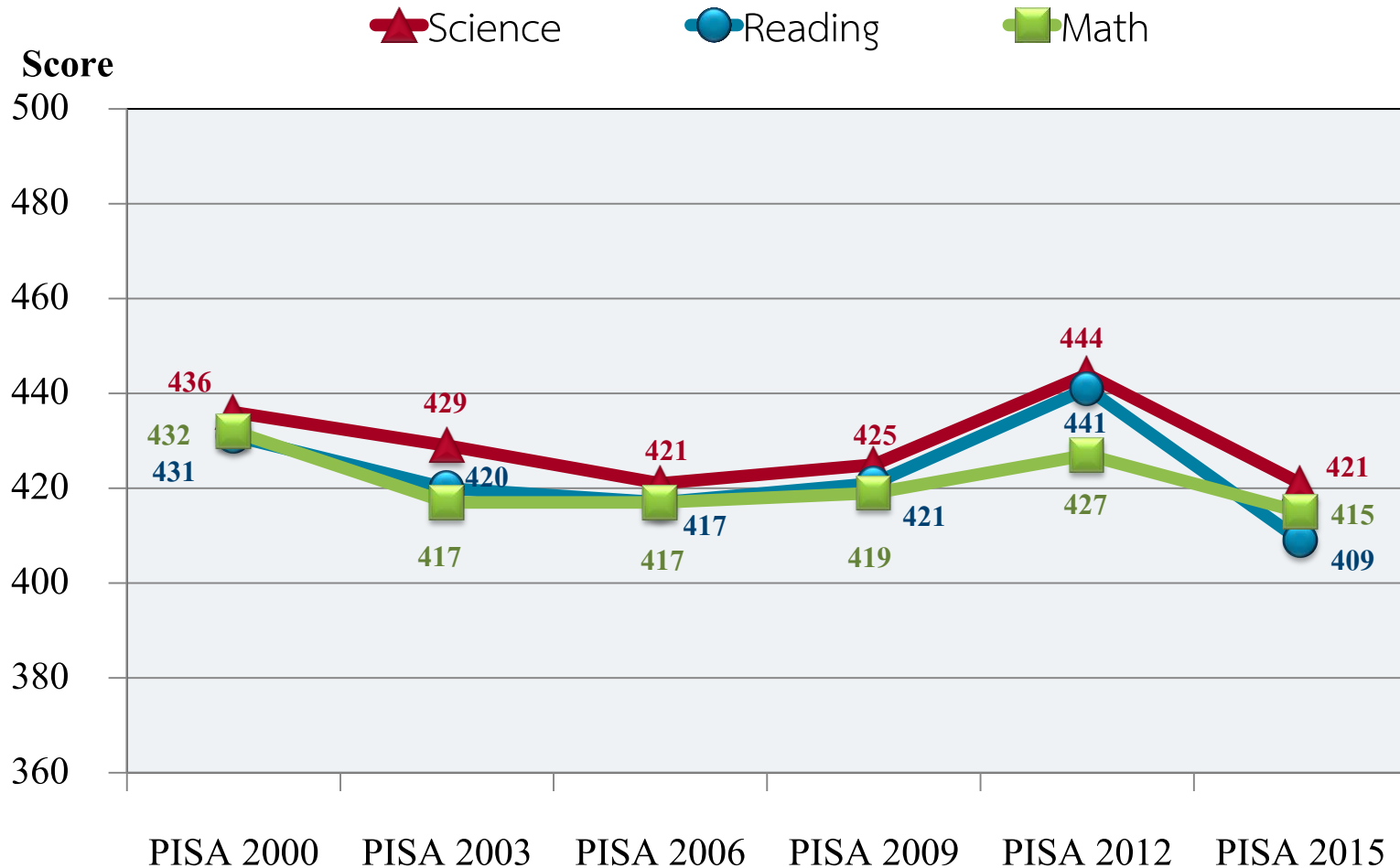
Education in THAILAND

Evidence-based Policy

Dr Teerakiat Jareonsettasin

Minister of Education, Thailand

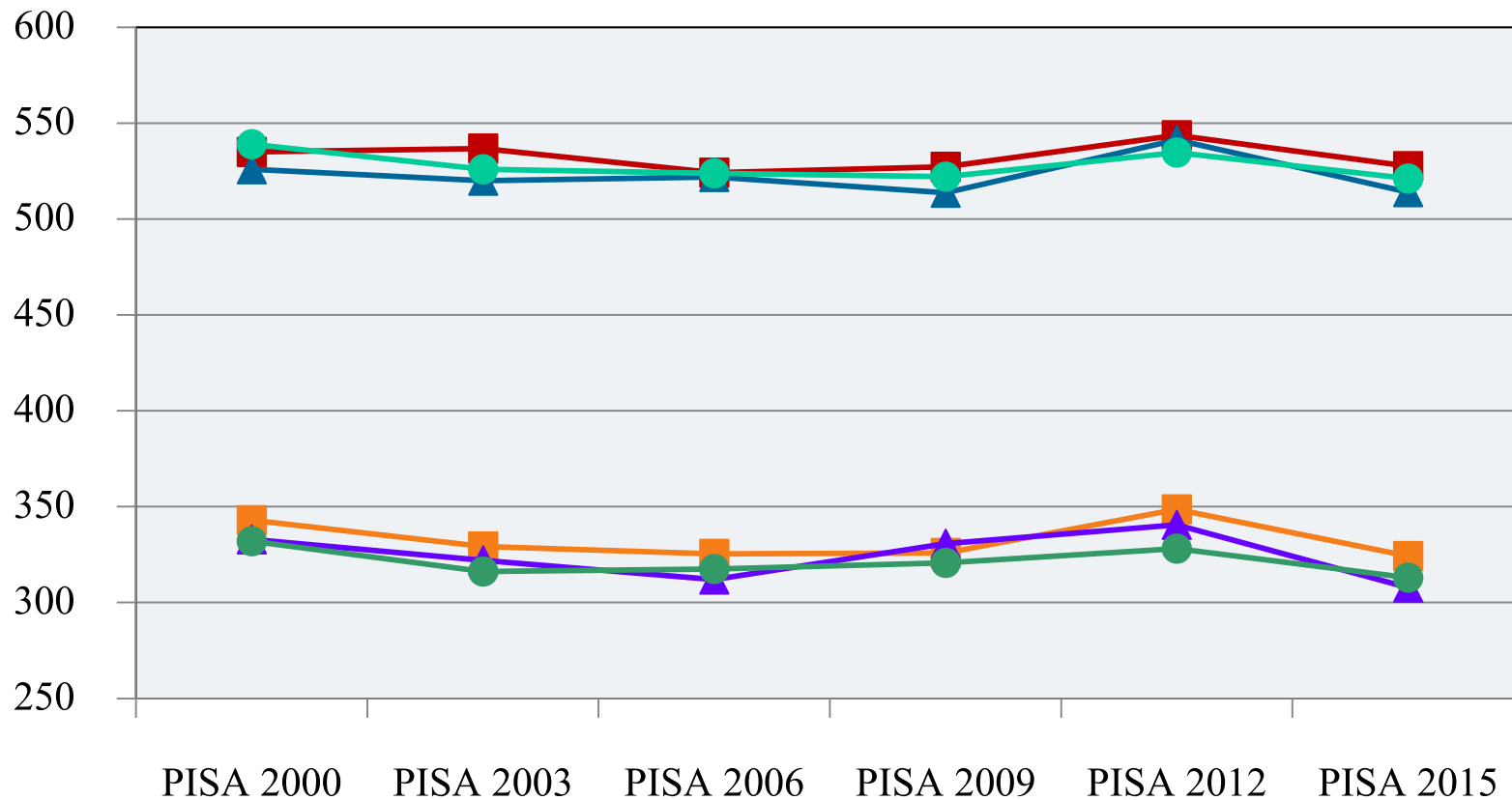
Thailand PISA 2000 – PISA 2015 Results



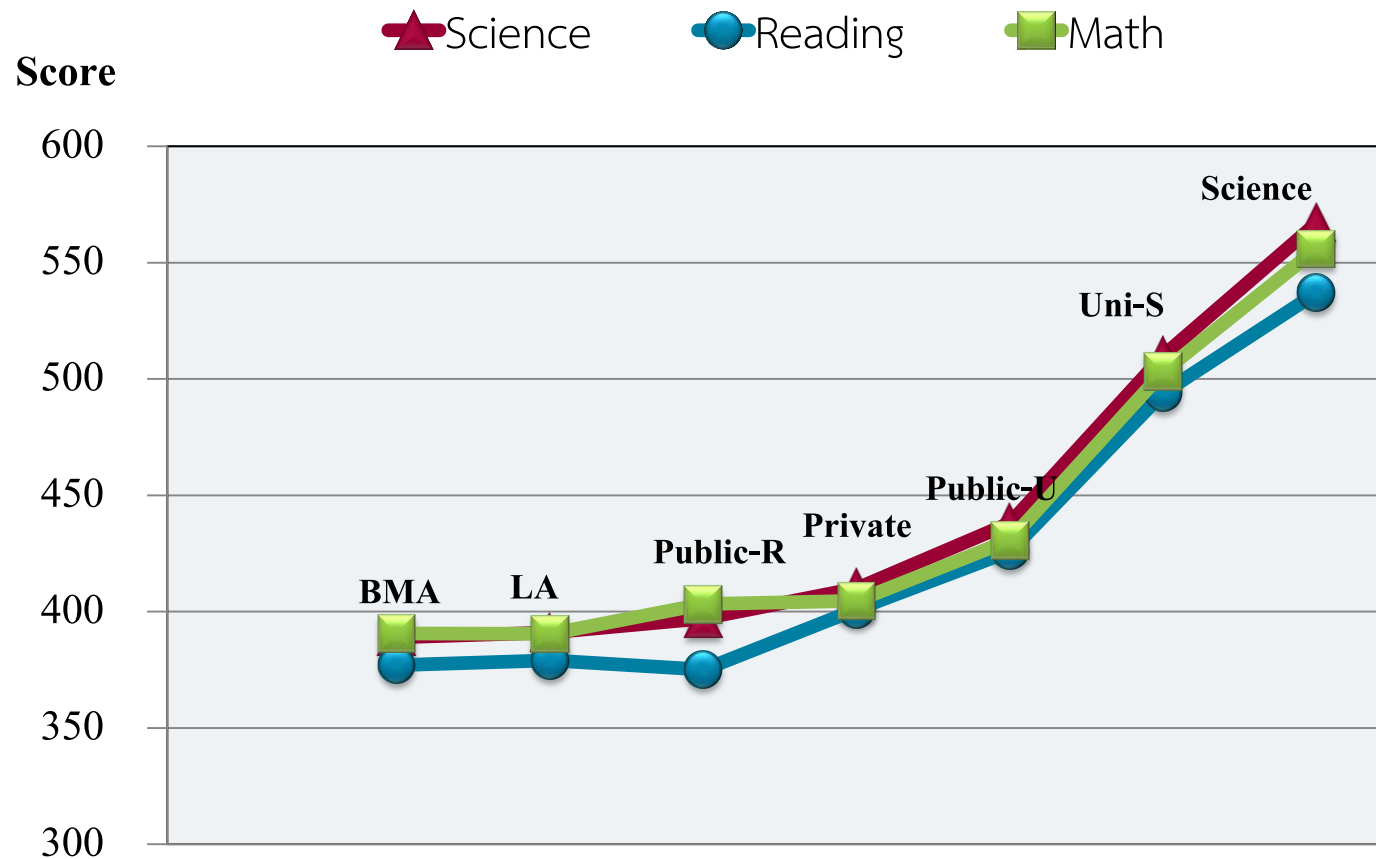
Top Performers VS Low Performers in PISA 2000 – PISA 2015

- Science - low performers (10th percentile)
- Reading - low performers (10th percentile)
- Math - low performers (10th percentile)
- Science - top performers (90th percentile)
- Reading - top performers (90th percentile)
- Math - top performers (90th percentile)

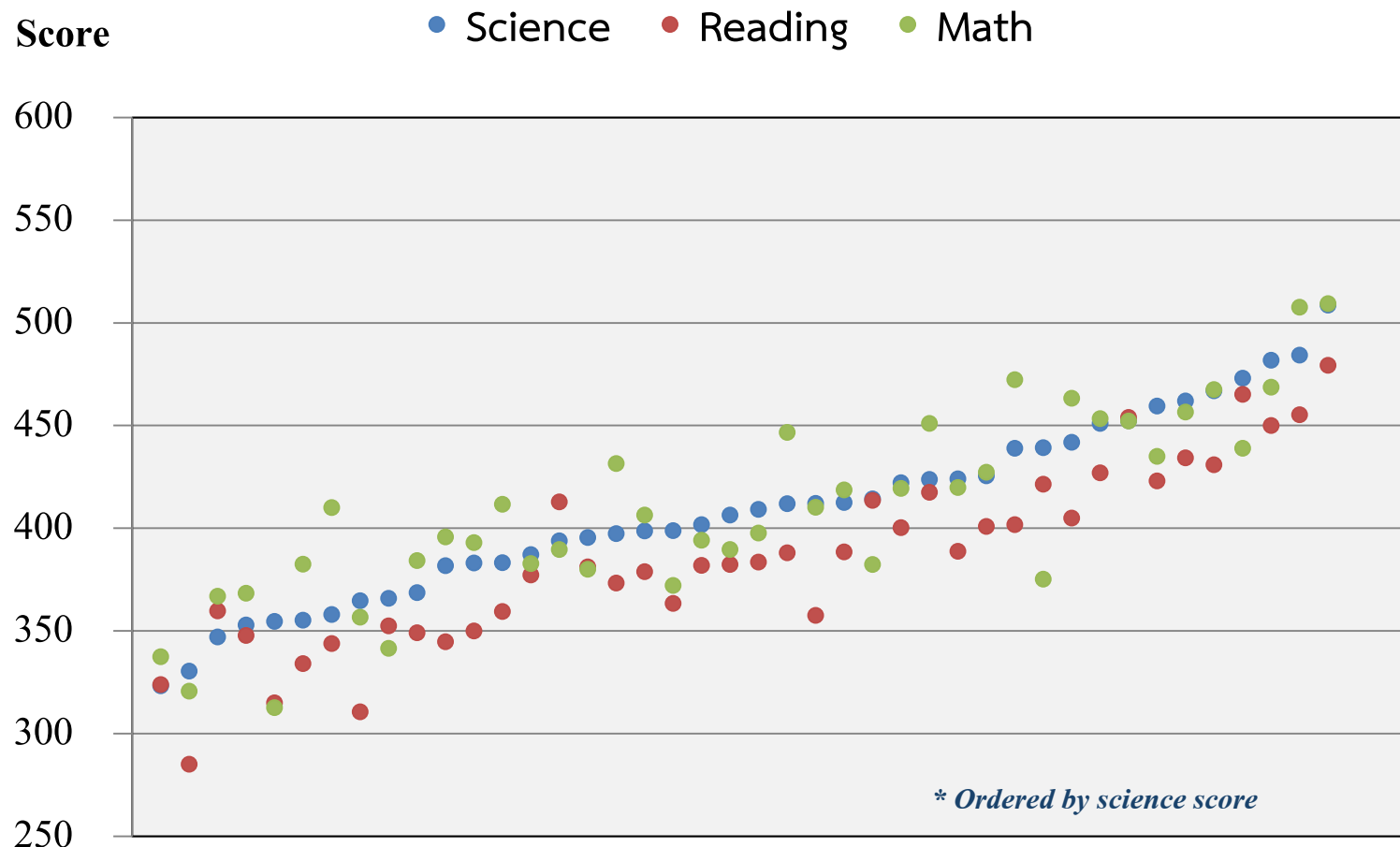
Score



PISA 2015 Results by School Administration



PISA 2015 Score Distribution among Public-Rural Schools

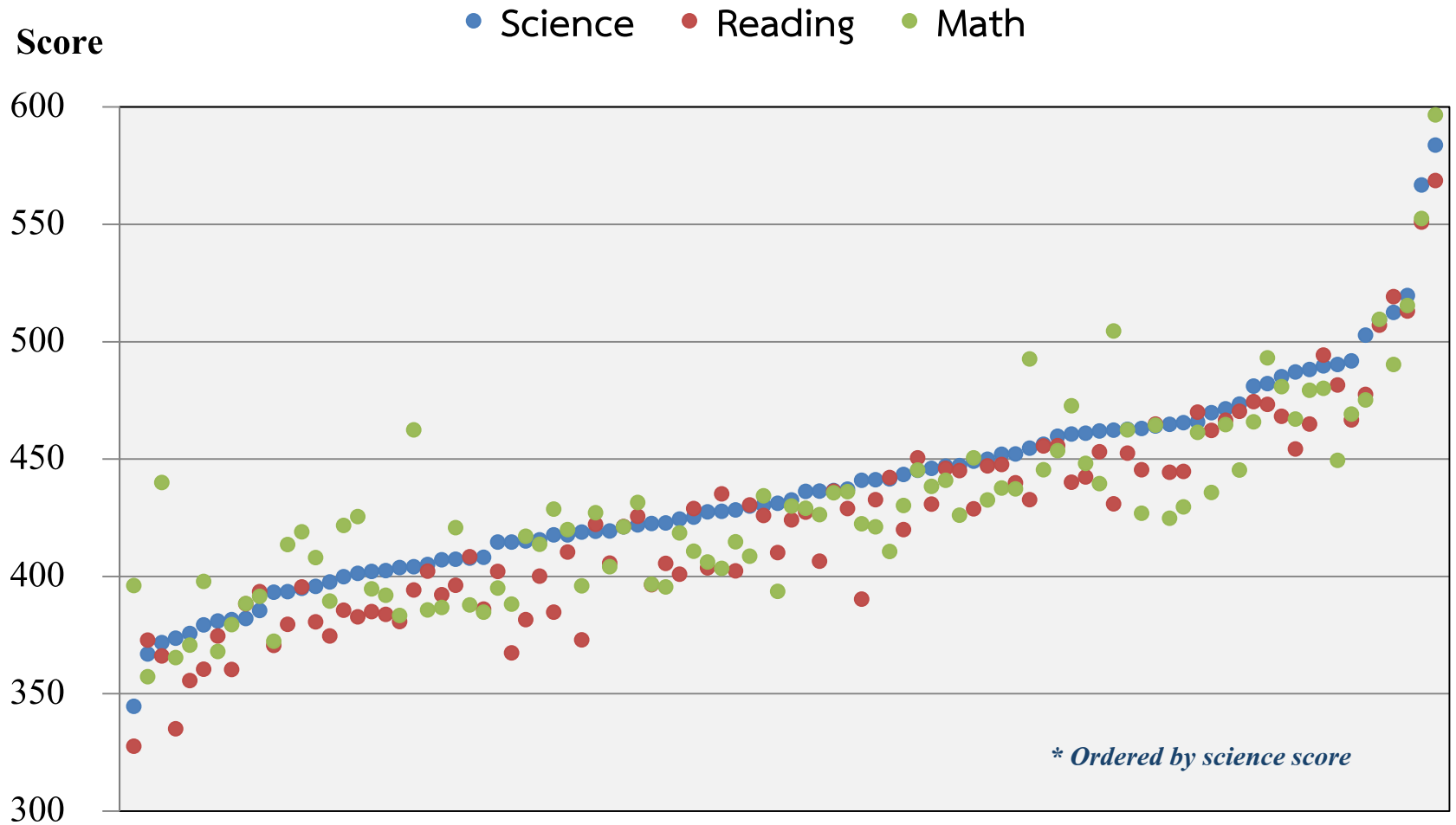


Science Score 323 - 509

Reading Score 285 - 479

Math Score 313 - 509

PISA 2015 Score Distribution among Public-Urban Schools

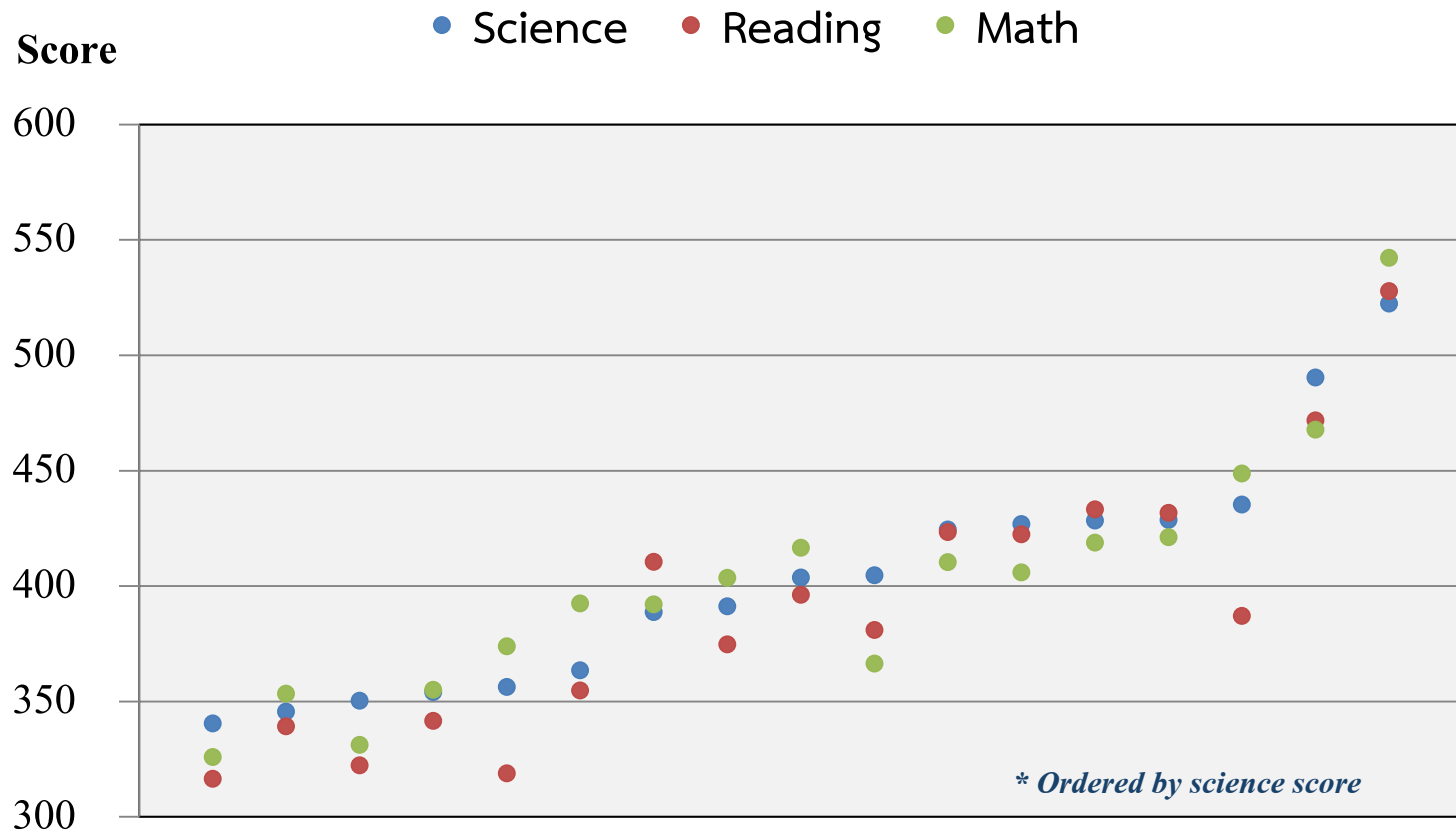


Science Score 345 - 584

Reading Score 328 - 569

Math Score 327 - 597

PISA 2015 Score Distribution among Private Schools

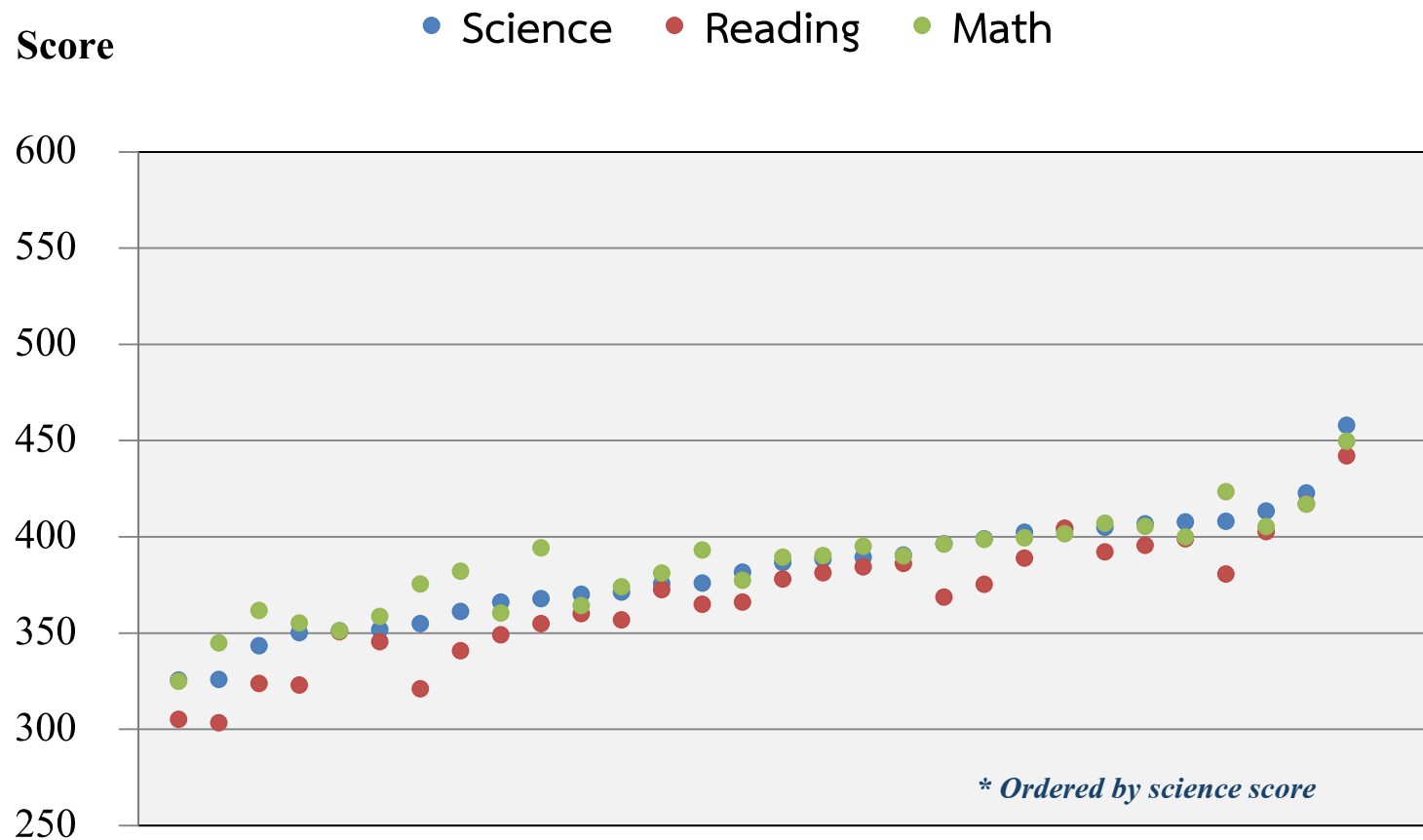


Science Score 341 - 523

Reading Score 317 - 528

Math Score 326 - 542

PISA 2015 Score Distribution among Bangkok Met Schools

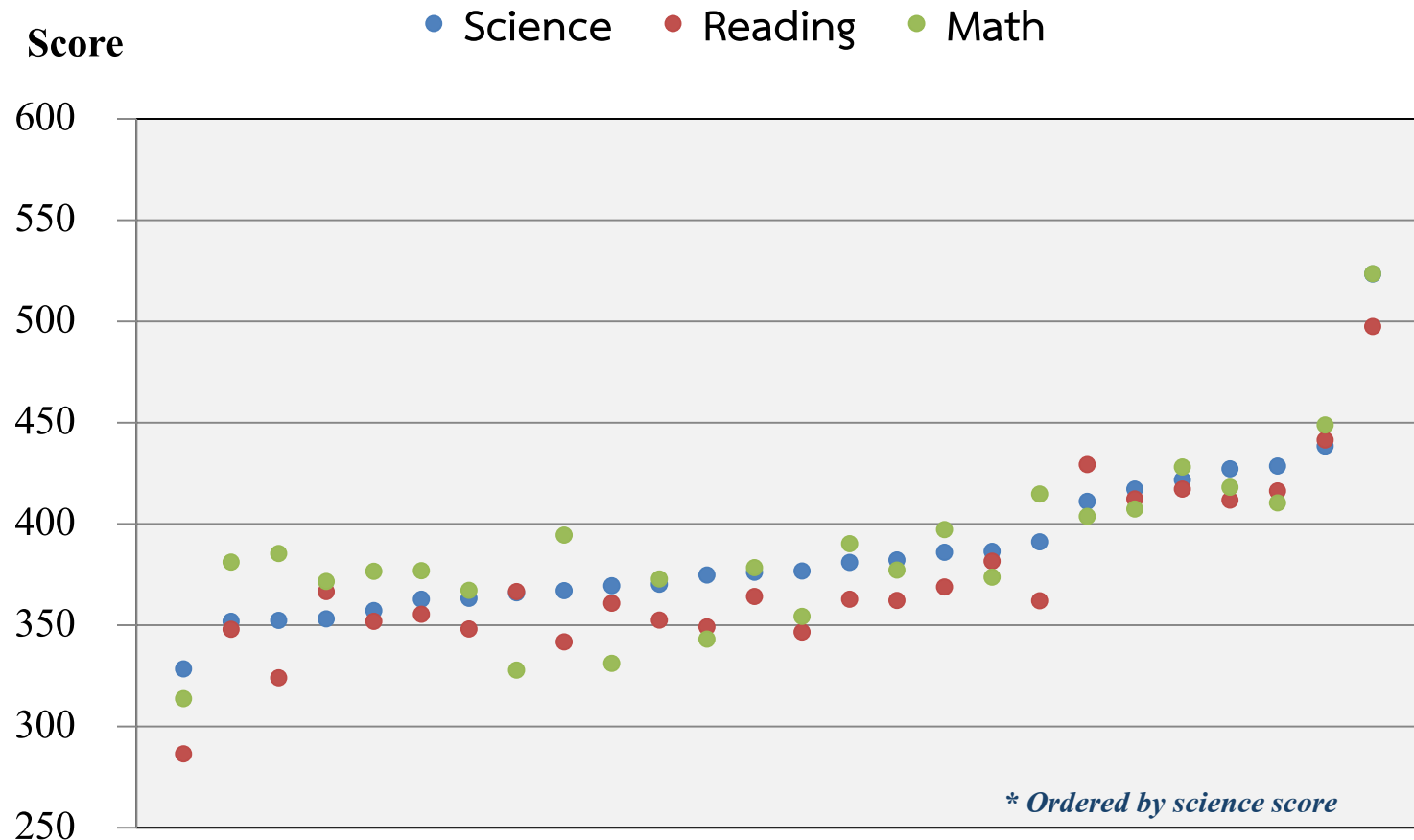


Science Score **326 - 458**

Reading Score **303 - 442**

Math Score **325 - 450**

PISA 2015 Score Distribution among Local Authorities Schools

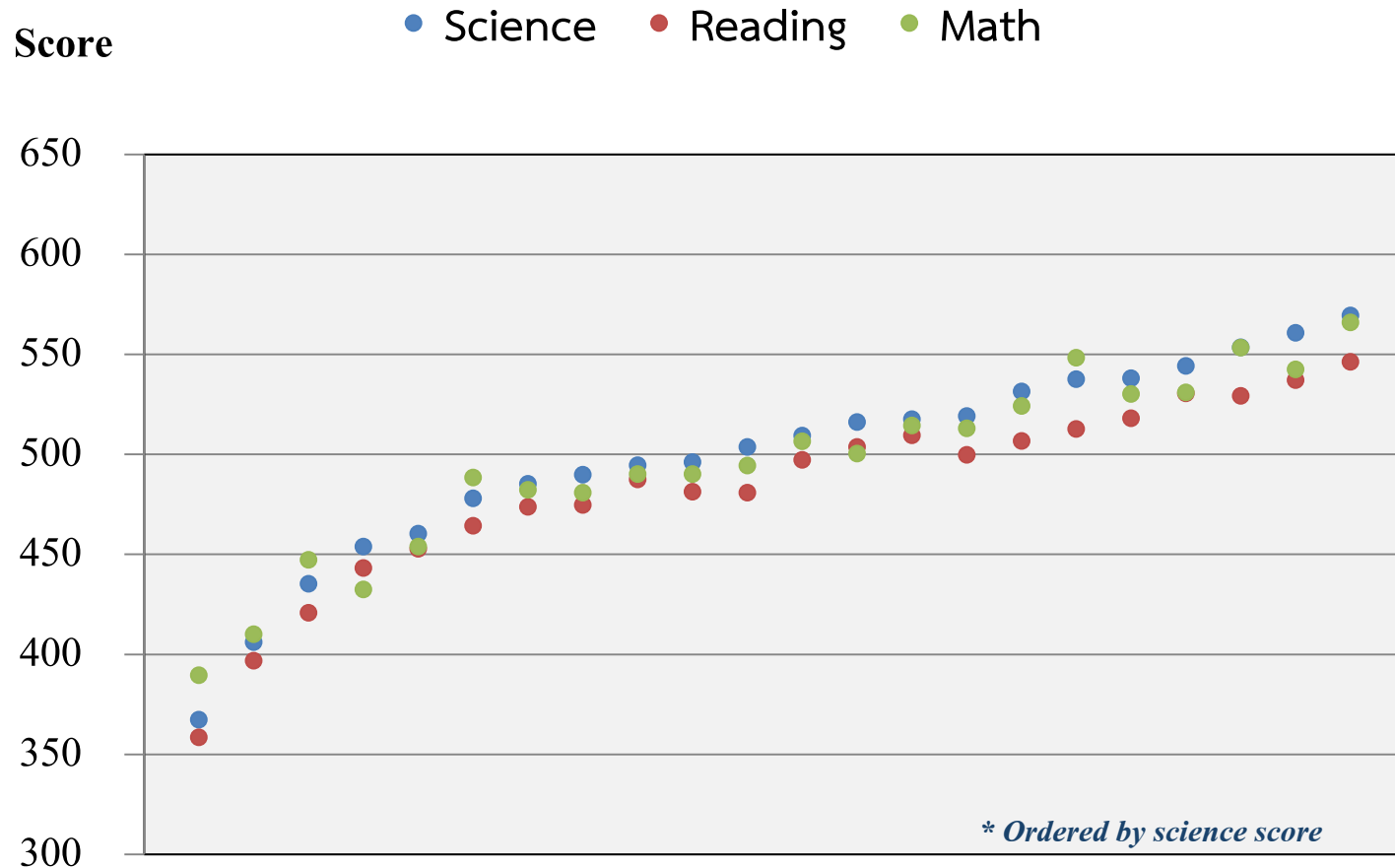


Science Score 328 - 523

Reading Score 287 - 498

Math Score 314 - 524

PISA 2015 Score Distribution among University Schools

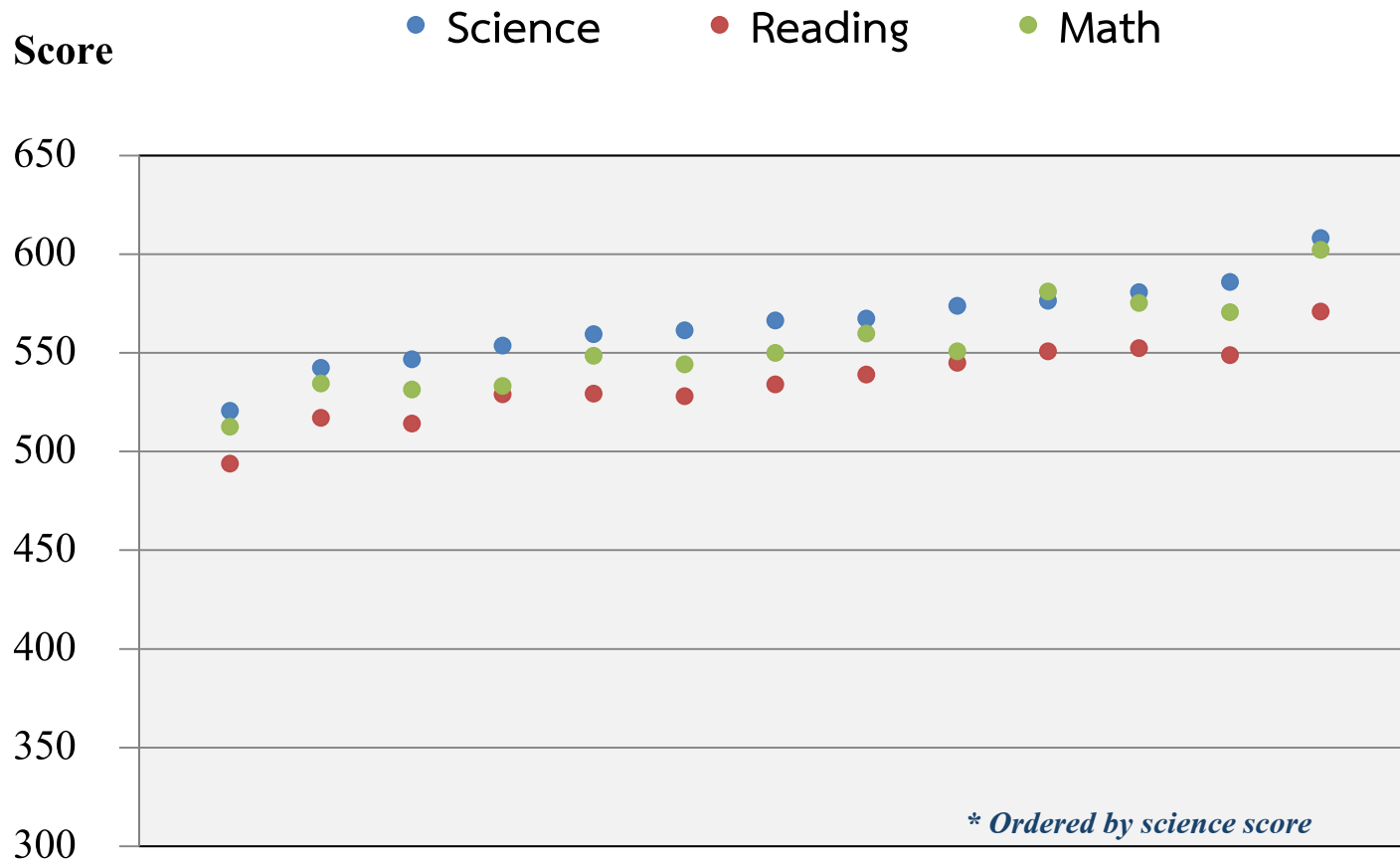


Science Score 367 - 569

Reading Score 358 - 546

Math Score 390 - 566

PISA 2015 Score Distribution among Science Schools



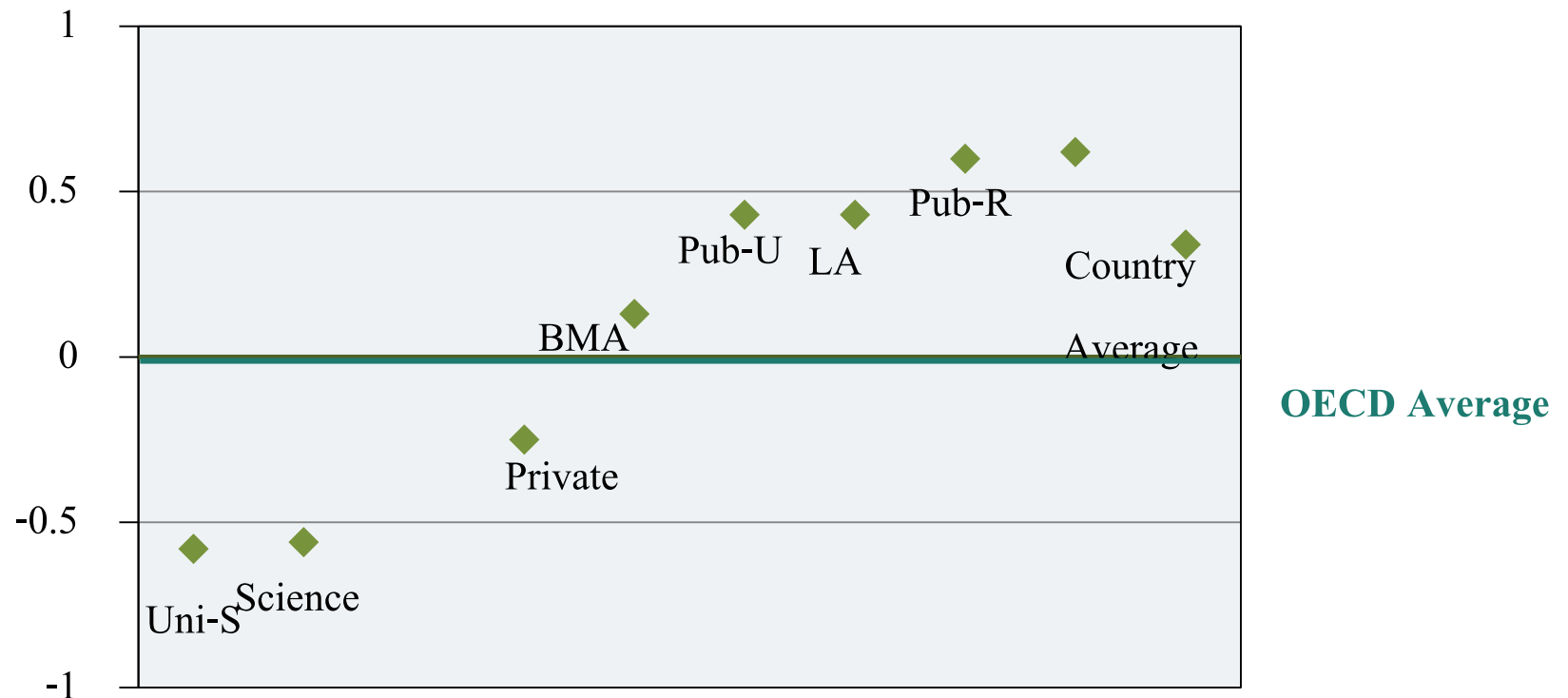
Science Score 521 - 608

Reading Score 494 - 571

Math Score 513 - 602

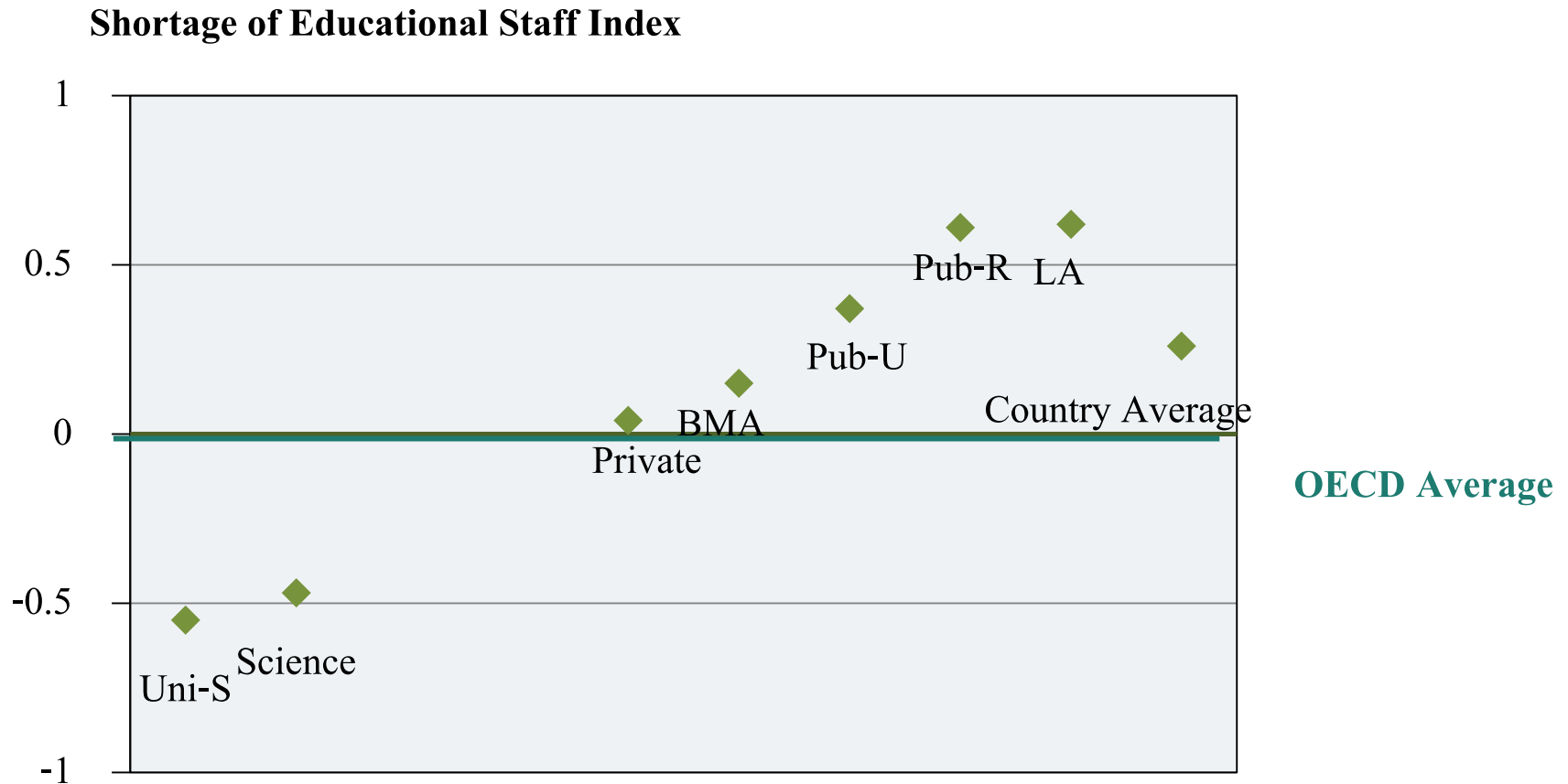
Shortage of Education Material

Shortage of Education Material Index



Education materials are educational material (e.g. textbooks, IT equipment, library or laboratory material) and physical infrastructure (e.g. building, grounds, heating/cooling, lighting and acoustic systems)

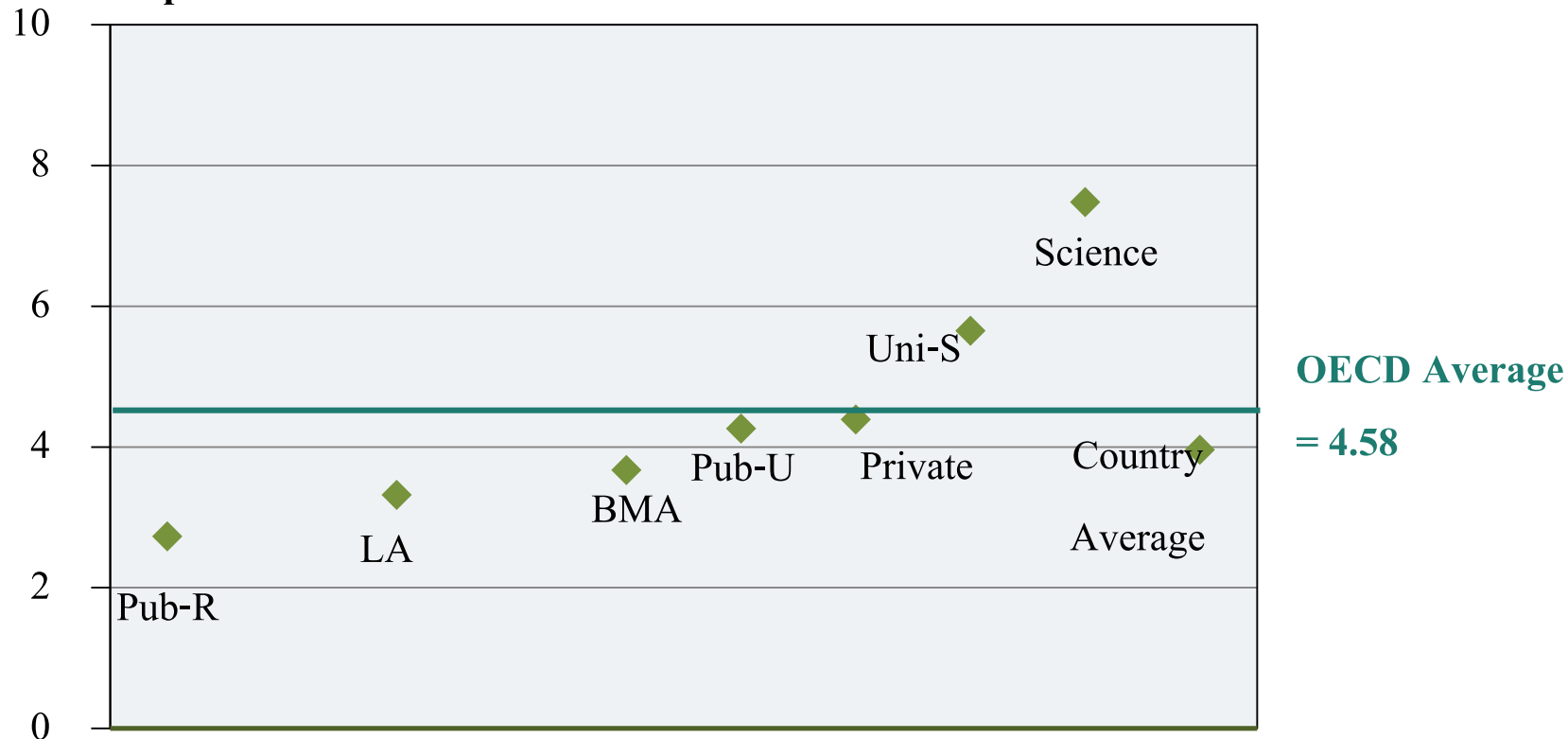
Shortage of Educational Staff



Shortage of educational staff means a lack of teaching staff, inadequate or poorly qualified teaching staff, a lack of assisting staff, and inadequate or poorly qualified assisting staff.

Science Specific Resources

Science Specific Resources Index

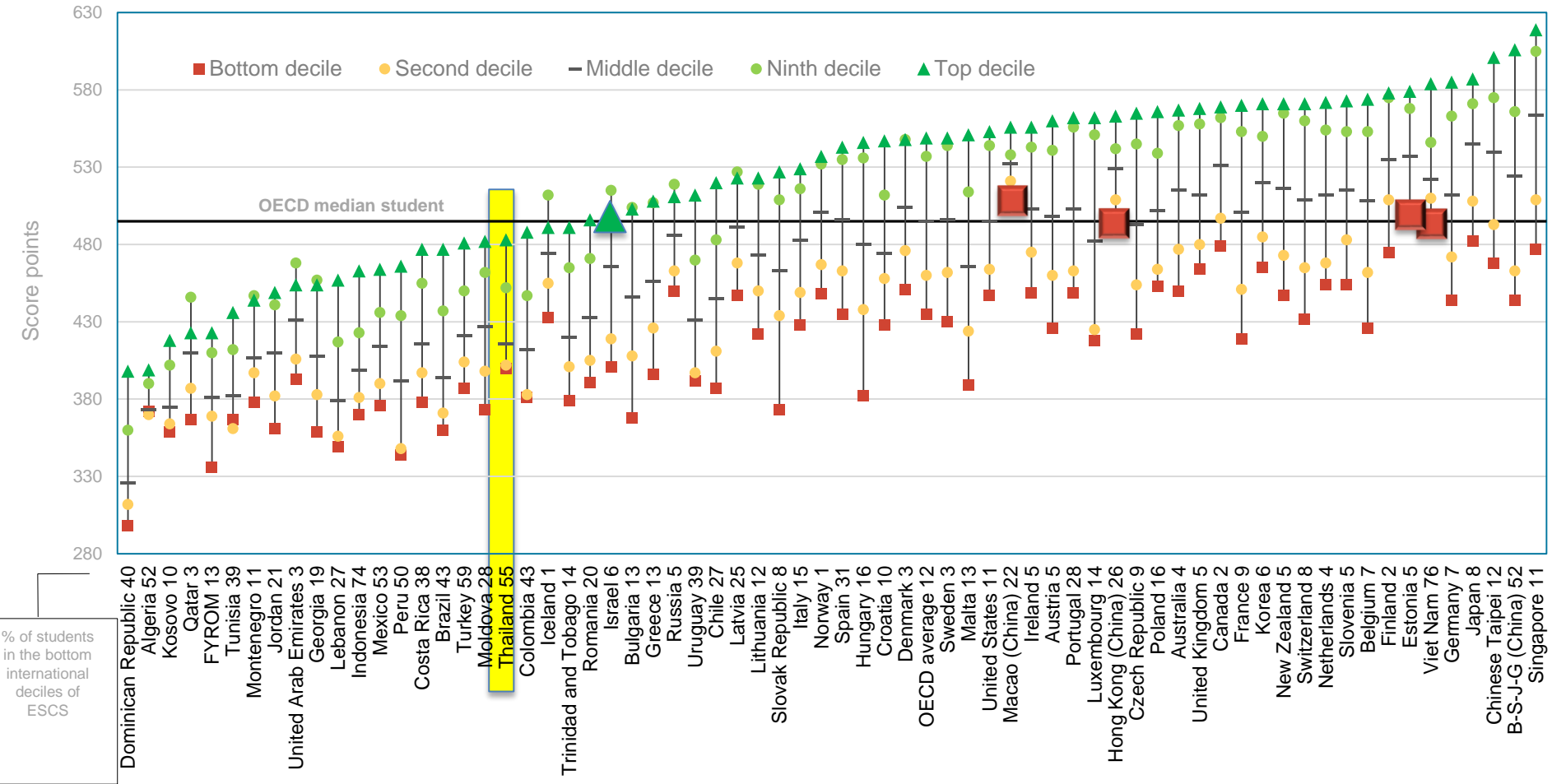


Science specific resources are resources available to school's science department, e.g., science department is well equipped, have extra funding, science teachers are best-educated among staff, have well-equipped laboratory, materials are in good shape, and have extra laboratory staff.

Poverty is not destiny - Science performance

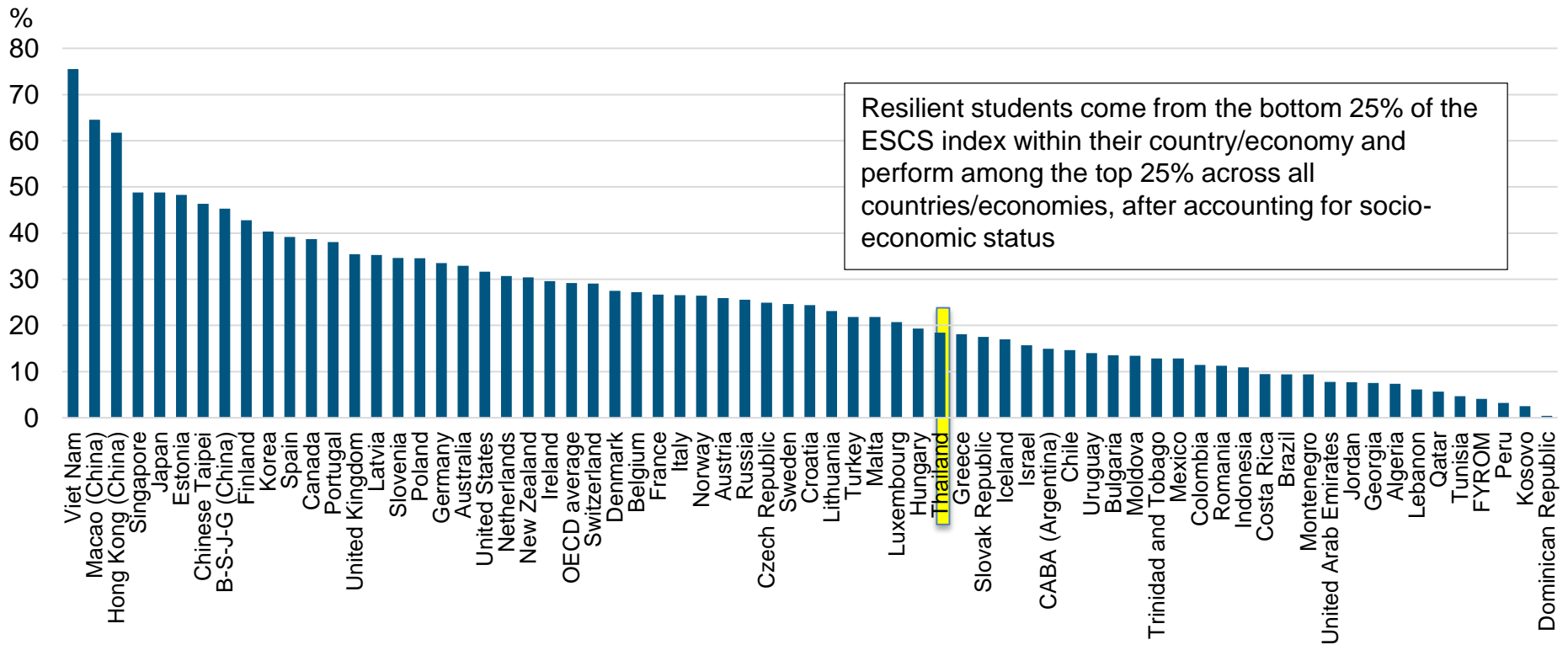
by international deciles of the PISA index of economic, social and cultural status (ESCS)

Figure I.6.7

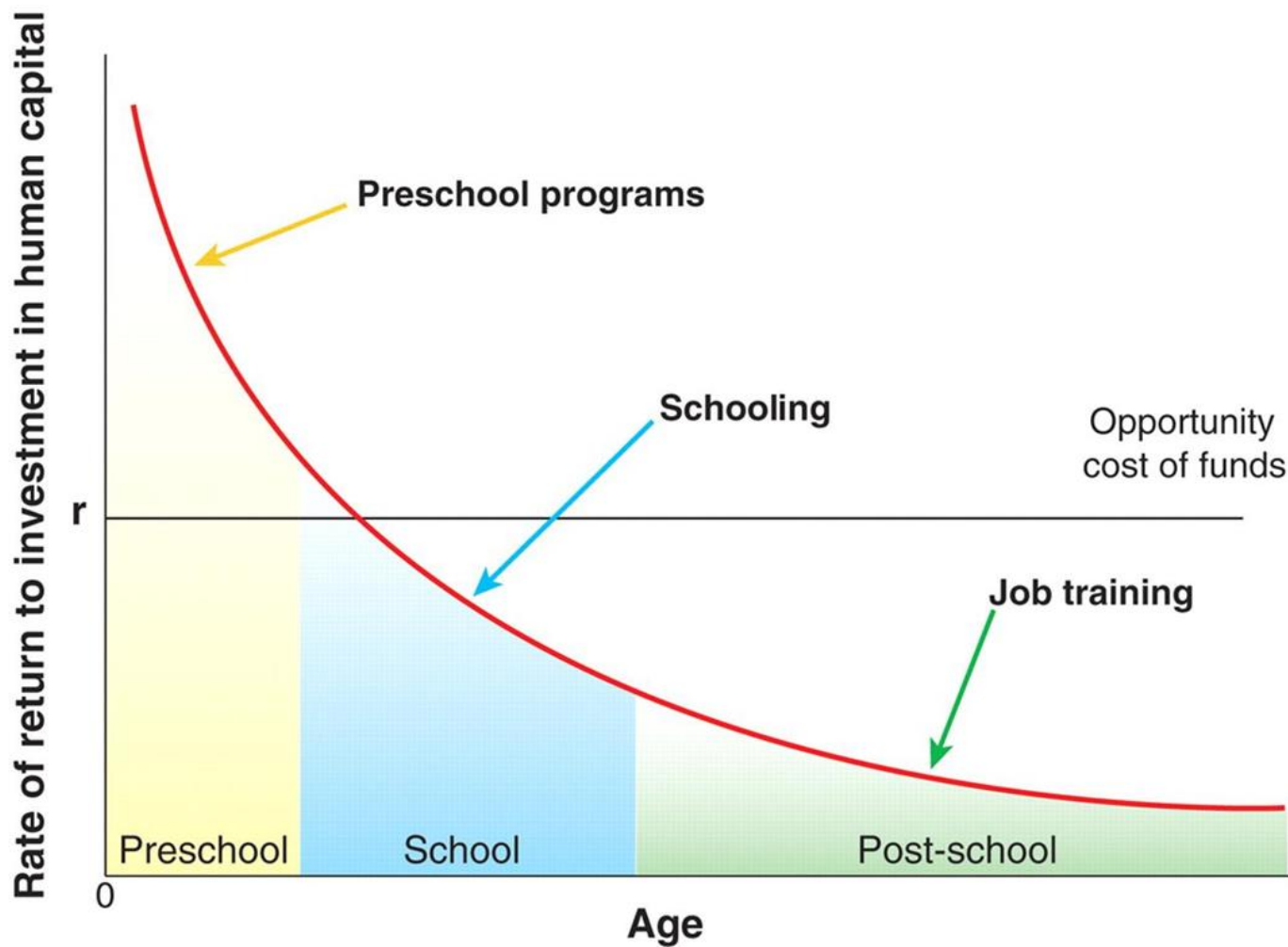


Percentage of resilient students

Figure I.6.10

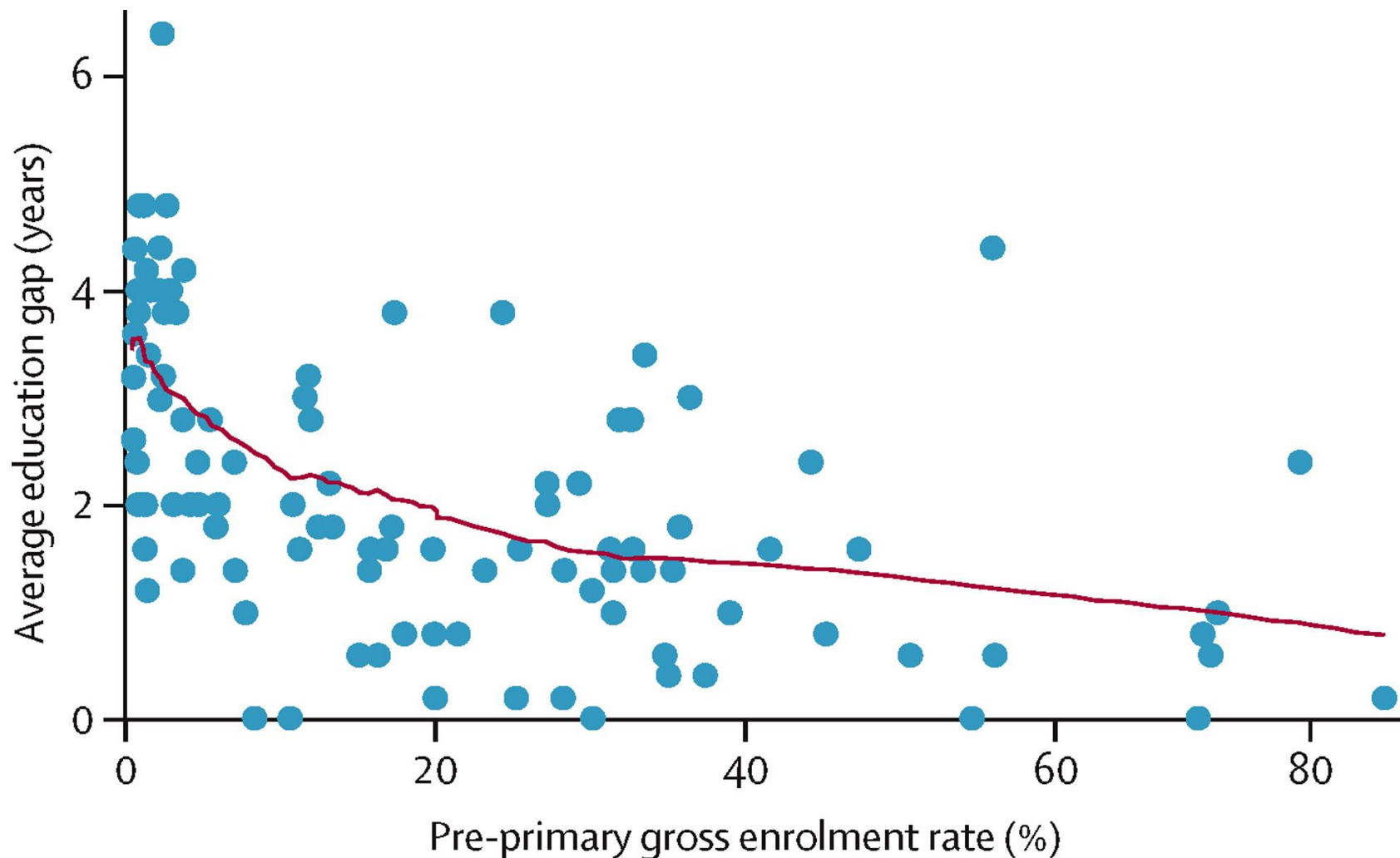


Priority for Educational Investment



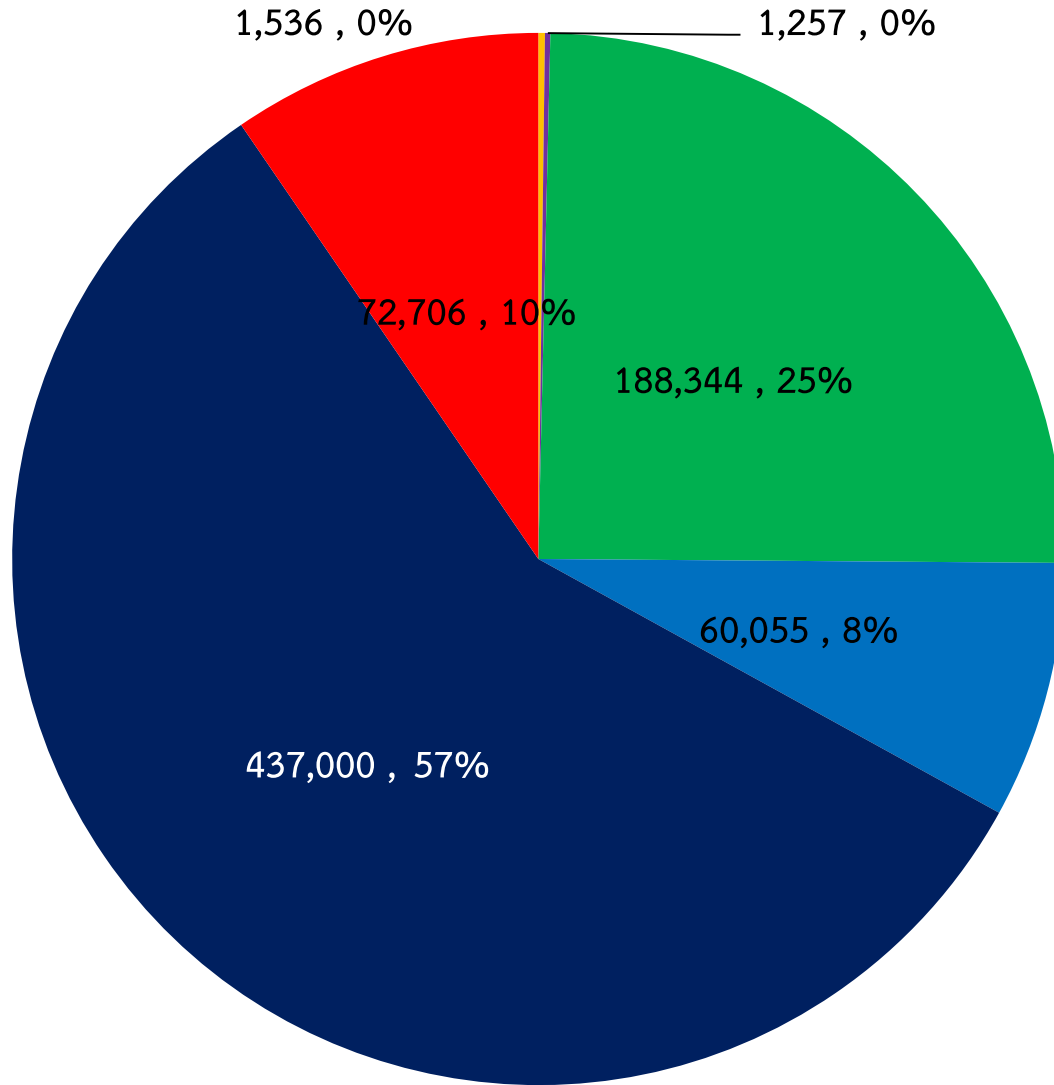
Source: Heckman, James J. 2006. "Skill Formation and the Economics of Investing in Disadvantaged Children."

Preschool enrolment and the gap in educational attainment



Source: Engle, Patrice L., et al. 2011. *The Lancet*. 378(9799): 1339-1353.

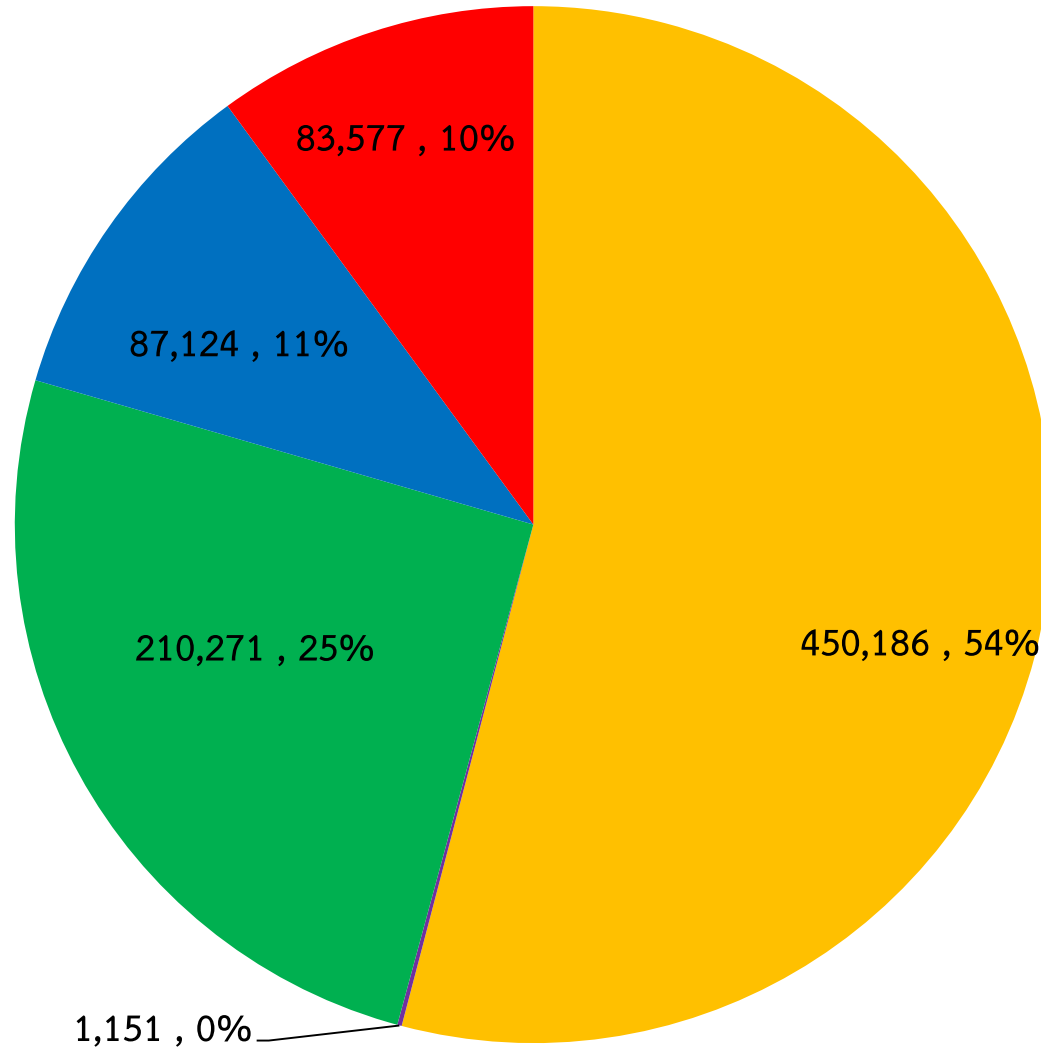
ประชากร 3 ปี (760,896 คน)



■ สพฐ ■ สานิต ■ เอกชน ■ ท้องถิ่น (อนุบาล) ■ ท้องถิ่น (ศูนย์เด็กเล็ก) ■ เด็กไม่ได้เข้าเรียน

ที่มา: ศูนย์เทคโนโลยีสารสนเทศและการสื่อสาร สป. ณ วันที่ 6 มีนาคม 2560

ประชากร 4 ปี (823,309 คน)



■ สพฐ ■ สาธิต ■ เอกชน ■ ท้องถิ่น ■ เด็กไม่ได้เข้าเรียน

ที่มา: ศูนย์เทคโนโลยีสารสนเทศและการสื่อสาร สป. ณ วันที่ 6 มีนาคม 2560

KPIs for Thai Education System

Preschool	Basic K-12	Vocational/Technical	University	Ratchapat Universities
<ul style="list-style-type: none"> Enrolment rate 	<ul style="list-style-type: none"> Accessibility Equity Quality Efficiency 	<ul style="list-style-type: none"> Enrolment rate Completion rate Employment rate within 6 months Employer's satisfaction 	<ul style="list-style-type: none"> Enrolment rate Completion rate Employment rate within 6 months Employment rates relevant to subject studied Employer's satisfaction 	<ul style="list-style-type: none"> Enrolment rate for local students Employment rate within 6 months Employment rates relevant to subject studied Employment rate in local areas Employer's satisfaction
<p>External QA system to check data accuracy</p>				